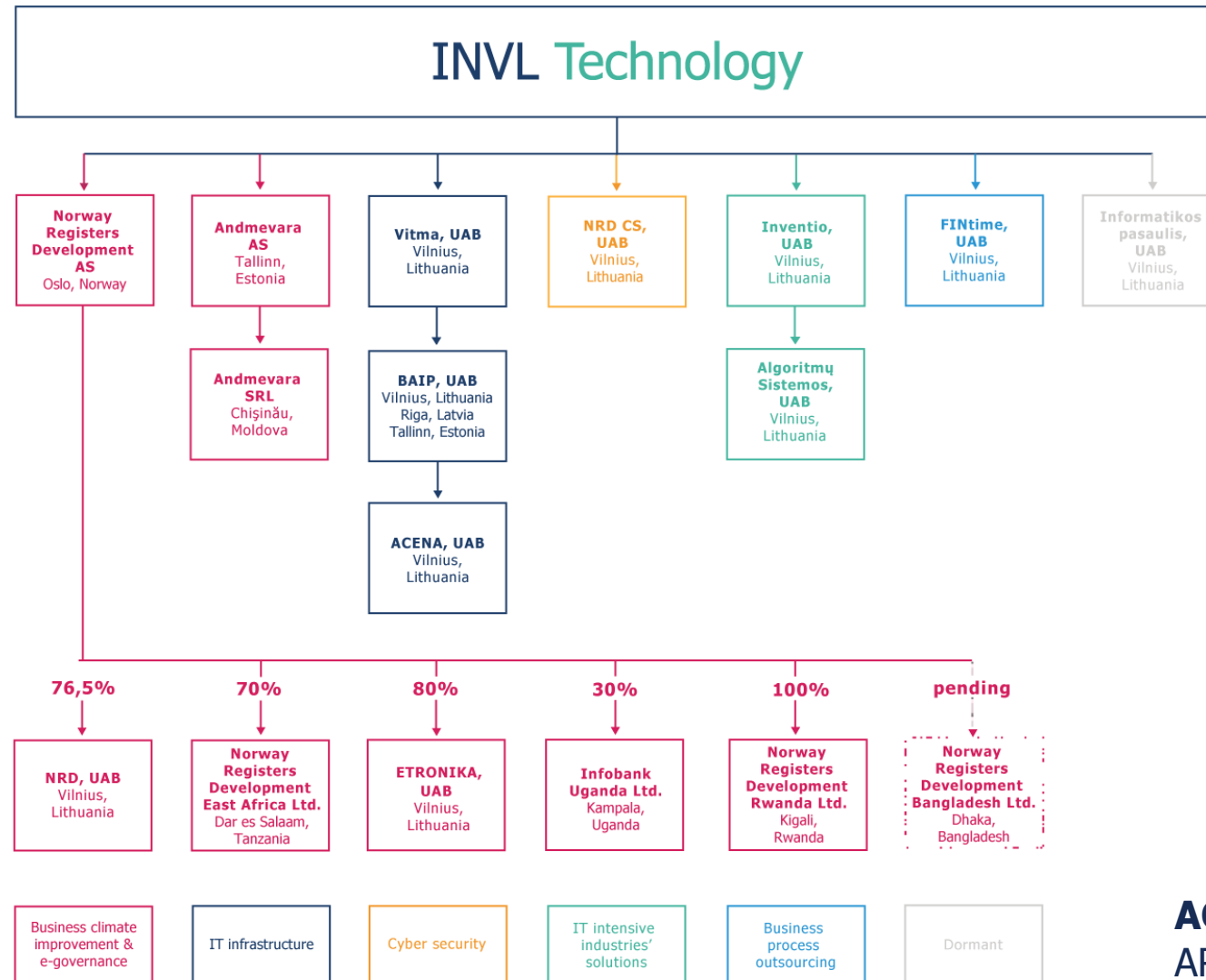


Surprises of Lithuanian Identity: from Norway to Bangladesh

Kazimieras Tonkūnas. 10-11-2016



STRUCTURE OF THE COMPANY



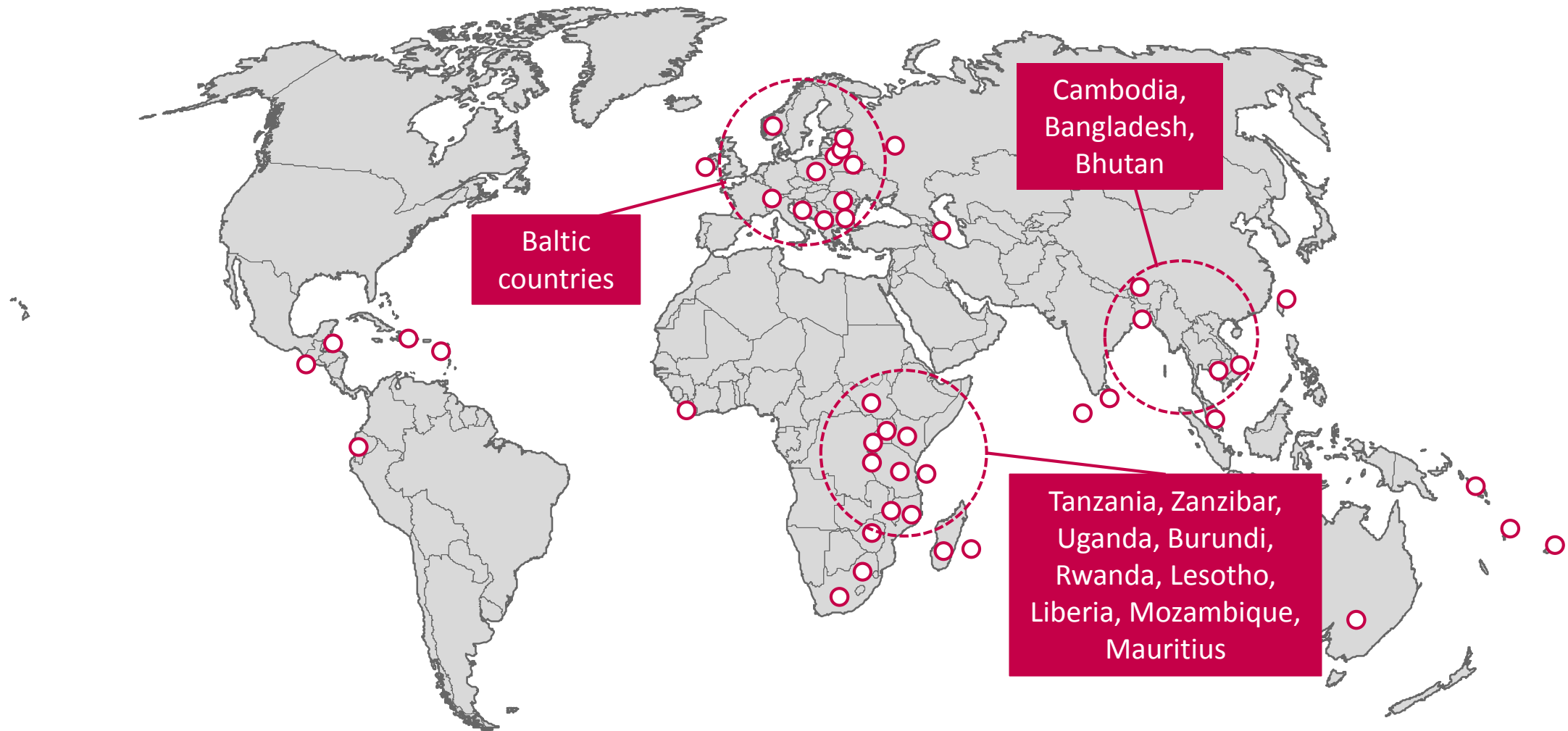
ETHNOPICTURE

2/3: LITHUANIANS



**1/3: ESTONIANS, LATVIANS,
MOLDOVANS, ROMANIANS,
NORWEGIANS, TANZANIANS,
UGANDANS, RWANDANS, BANGLADESHI**

PROJECT GEOGRAPHY



LITHUANIAN APPROACH TO INTERNATIONAL EXPANSION

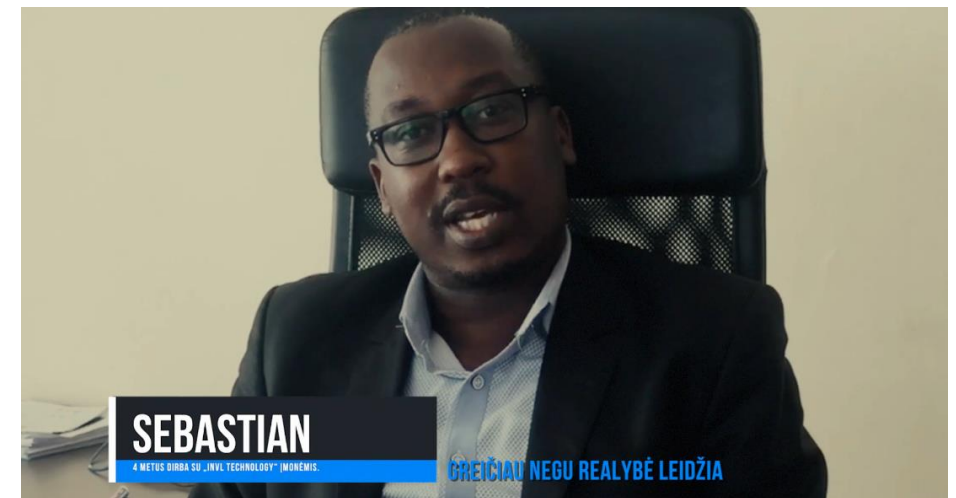
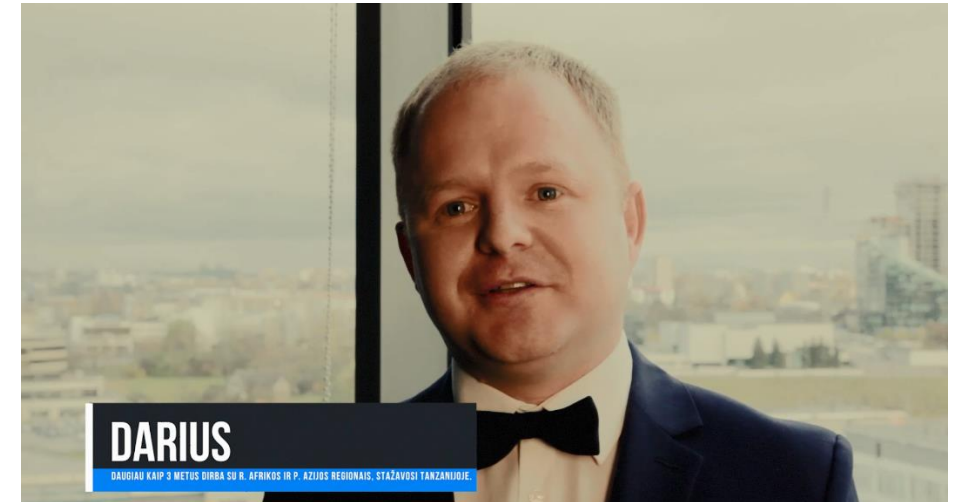
What applies to Lithuanians does not necessarily apply to Latvians, Estonians, Czech, Slovaks, Norwegians:

- World domination: attractive dream or problematic necessity?
- Constant business trips abroad: a bonus or a reason to change your job?



LOOKING AT YOURSELF FROM ANOTHER PERSPECTIVE

- What does it mean to work with Lithuanians;
- How Lithuanians differ from other nationalities;
- Main mistakes Lithuanians make at work/personal life;
- Lithuanian approach to work;
- Lithuanian posture;
- How do Lithuanians relax;
- What should Lithuanians do to be more successful.



LIETUVIŠKO CHARAKTERIO YPATUMAI: KOKIO VERTINIMO TIKIMĖS IR KAIP MUS PASAULIS MATO IŠ TIKRŲJŲ

Specifics of Lithuanian character: what evaluation do we expect and how does the world actually see us.

Please see the video here: <https://youtu.be/8yRjkCpMfMk>

WE THINK THAT THIS IS HOW OTHERS THINK ABOUT LITHUANIANS

- Hard working;
- Highly qualified employees;
- Demanding and impatient;
- Work is more important than personal life;
- Doers not planners;
- Lack capability of understanding others.



WHAT DO TANZANIANS, BANGLADESHI, NORWEGIANS THINK ABOUT LITHUANIANS

WORK AND BUSINESS:

- Organised, hard working and demanding professionals;
- Clearly know what they want, when they want it, and how they want it;
- Straightforward and undiplomatic;
- Independent individualists but capable of working in organised groups;
- Stubborn, combative, even ruthless towards achieving the targets;
- Believe they can surpass the reality;
- Inconsiderate of local culture and environment;
- Like challenges.

PERSONAL LIFE:

- Not so shy;
- Like to explore the environment, travel.



WHAT WAS NOT MENTIONED

- Creativity;
- Artistry;
- Imagination.



HAVE A NICE DAY!

LITHUANIAN „YELLOW BRICK ROAD“... DAR ES SALAAM



Please see the video here: <https://youtu.be/TmUPlaLKcqc>

DISCLAIMER

- This is the presentation of UTIB INVL Technology (hereinafter – the Company).
- The Company is not responsible for any decisions made by third parties on the basis of information provided only in this presentation and assumes no responsibility for expenses or direct or indirect losses incurred in the use of this information alone.
- The information is of a promotional nature. It is not and may not be construed as an offer, an investment recommendation or investment research.
- The depiction of the company's structure is simplified. Unless specified otherwise in the depiction, the company is owned 100%.
- The information provided does not cover all information disclosed by the Company and should be read together with the Company's publicly announced information.
- Financial data included in the presentation should be assessed together with the financial statements. The data in the presentation reflects the results of a previous period and is not a reliable indicator of future results.
- The dates indicated are preliminary and may change.
- The information provided in this promotional material reflects the Company's opinion at the time it was submitted/declared. The information is provided once, but may be updated at the Company's discretion.
- The value of financial instruments can both rise and fall, so there is a risk of losing part or all of the money invested. The investors' right to demand to redeem the Shares of the Company is limited.
- UTIB INVL Technology has a Prospectus of the shares, which investors can find at the company's website www.invltechnology.com.

PICTURES USED IN PRESENTATION

- <http://www.nzt.lt/go.php/lit/Privaciu-zemes-ukio-paskirties-zemes-sklypu-nuoma-aukciono-budu>
- <http://giphy.com/gifs/field-of-dreams-BsR6hu8GJtSDe>
- http://www3.lrs.lt/pls/inter/w5_show?p_r=2443&p_k=1&p_d=155120
- <http://www.treecakes.com/>

